

Integrating the Healthcare Enterprise



5

**IHE Radiology  
Technical Framework Supplement**

10

**Management of Radiology Report Templates  
(MRRT)**

15

**Rev. 1.7 – Trial Implementation**

20

Date: July 27, 2018  
Authors: IHE Radiology Technical Committee  
Email: radiology@ihe.net

25

**Please verify you have the most recent version of this document. See [here](#) for Trial Implementation and Final Text versions and [here](#) for Public Comment versions.**

## Foreword

30 This is a supplement to the IHE Radiology Technical Framework V17.0. Each supplement undergoes a process of public comment and trial implementation before being incorporated into the volumes of the Technical Frameworks.

This supplement is published on July 27, 2018 for trial implementation and may be available for testing at subsequent IHE Connectathons. The supplement may be amended based on the results of testing. Following successful testing it will be incorporated into the Radiology Technical Framework. Comments are invited and may be submitted at  
35 [http://ihe.net/Radiology\\_Public\\_Comments](http://ihe.net/Radiology_Public_Comments).

This supplement describes changes to the existing technical framework documents.

“Boxed” instructions like the sample below indicate to the Volume Editor how to integrate the relevant section(s) into the relevant Technical Framework volume.

40 

<i>Amend Section X.X by the following:</i>
--

Where the amendment adds text, make the added text **bold underline**. Where the amendment removes text, make the removed text **~~bold strikethrough~~**. When entire new sections are added, introduce with editor’s instructions to “add new text” or similar, which for readability are not bolded or underlined.

45

General information about IHE can be found at [www.ihe.net](http://www.ihe.net).

Information about the IHE Radiology domain can be found at [http://ihe.net/IHE\\_Domains](http://ihe.net/IHE_Domains).

Information about the organization of IHE Technical Frameworks and Supplements and the process used to create them can be found at [http://ihe.net/IHE\\_Process](http://ihe.net/IHE_Process) and <http://ihe.net/Profiles>.

50 The current version of the IHE Radiology Technical Framework can be found at [http://ihe.net/Technical\\_Frameworks](http://ihe.net/Technical_Frameworks).

## CONTENTS

55	Introduction to this Supplement.....	6
	Open Issues and Questions .....	6
	Closed Issues .....	6
	General Introduction .....	9
60	Appendix A – Actor Summary Definitions .....	9
	Appendix B – Transaction Summary Definitions.....	9
	Glossary .....	9
	<b>Volume 1 – Profiles .....</b>	<b>10</b>
	33 Management of Radiology Report Templates (MRRT) Profile .....	10
65	33.1 MRRT Actors, Transactions, and Content Modules.....	10
	33.1.1 Actor Descriptions and Actor Profile Requirements.....	12
	33.1.1.1 Report Template Manager .....	12
	33.2 MRRT Actor Options.....	12
	33.3 MRRT Required Actor Groupings.....	12
70	33.4 MRRT Overview.....	12
	33.4.1 Concepts .....	12
	33.4.2 Use Cases .....	13
	33.4.2.1 Use Case #1: New Template Storage .....	13
	33.4.2.1.1 New Template Storage Use Case Description.....	13
75	33.4.2.1.2 New Template Storage Process Flow .....	13
	33.4.2.2 Use Case #2: Template Import.....	13
	33.4.2.2.1 Template Import Use Case Description.....	13
	33.4.2.2.2 Template Import Process Flow .....	14
	33.4.2.3 Use Case #3: Template Migration.....	15
80	33.4.2.3.1 Template Migration Use Case Description.....	15
	33.4.2.3.2 Template Migration Process Flow .....	15
	33.4.2.4 Use Case #4: Build Template .....	15
	33.4.2.4.1 Build Template Description.....	15
	33.4.2.4.2 Template Import Process Flow .....	16
85	33.4.2.5 Use Case #5: Manage Template .....	16
	33.4.2.5.1 Manage Template Description.....	16
	33.4.2.5.2 Manage Template Process Flow .....	17
	33.5 MRRT Security Considerations .....	17
	33.6 MRRT Cross Profile Considerations .....	17
90	<b>Volume 3 – Transactions (continued) .....</b>	<b>18</b>
	4.103 Retrieve Imaging Report Template [RAD-103] .....	18
	4.103.1 Scope .....	18
	4.103.2 Actor Roles.....	18
	4.103.3 Referenced Standards.....	18
95	4.103.4 Interaction Diagram.....	19

	4.103.4.1 Request Template Message .....	19
	4.103.4.1.1 Trigger Events .....	19
	4.103.4.1.2 Message Semantics.....	19
	4.103.4.1.3 Expected Actions .....	20
100	4.103.4.2 Template Response Message.....	21
	4.103.4.2.1 Trigger Events .....	21
	4.103.4.2.2 Message Semantics.....	21
	4.103.4.2.3 Expected Actions .....	21
	4.103.5 Security Considerations.....	21
105	4.103.5.1 Security Audit Considerations.....	21
	4.104 Store Imaging Report Template [RAD-104].....	21
	4.104.1 Scope .....	21
	4.104.2 Actor Roles.....	21
	4.104.3 Referenced Standards.....	22
110	4.104.4 Interaction Diagram.....	22
	4.104.4.1 Send Template Message.....	22
	4.104.4.1.1 Trigger Events .....	23
	4.104.4.1.2 Message Semantics.....	23
	4.104.4.1.3 Expected Actions .....	24
115	4.104.5 Security Considerations.....	25
	4.104.5.1 Security Audit Considerations.....	25
	4.105 Query Imaging Report Template [RAD-105].....	25
	4.105.1 Scope .....	25
	4.105.2 Actor Roles.....	25
120	4.105.3 Referenced Standards.....	25
	4.105.4 Interaction Diagram.....	26
	4.105.4.1 Query Templates Message .....	26
	4.105.4.1.1 Trigger Events .....	26
	4.105.4.1.2 Message Semantics.....	26
125	4.105.4.1.3 Expected Actions .....	28
	4.105.4.2 Template Response Message.....	29
	4.105.4.2.1 Trigger Events .....	29
	4.105.4.2.2 Message Semantics.....	29
	4.105.4.2.3 Expected Actions .....	31
130	4.105.5 Security Considerations.....	32
	4.105.5.1 Security Audit Considerations.....	32
	<b>Volume 3 – Content Modules.....</b>	<b>33</b>
	8.1 Report Template Structure .....	33
	8.1.1 Template Attributes.....	37
135	8.1.2 Section Attributes.....	39
	8.1.3 Report Template Fields .....	39
	8.1.3.1 Field Attributes.....	40
	8.1.3.2 Linkage Between Template Text and Template Fields.....	42

	8.1.3.3 Text or TextArea Field Attributes .....	42
140	8.1.3.4 Numeric Field Attributes .....	42
	8.1.3.5 Selection List Field Attributes .....	43
	8.1.3.5.1 Selection Items.....	44
	8.1.3.6 Date Field Attributes .....	44
	8.1.3.7 Time Field Attributes .....	45
145	8.1.3.8 Merge Field Attributes .....	45
	8.1.3.9 Checkbox Field Attributes.....	45
	8.1.3.10 Radio Button Field Attributes .....	46
	8.1.4 Incorporating Templates into Other Templates .....	46
	8.1.5 Permitted HTML5 Formatting Tags .....	46
150	8.1.6 Coded Content.....	47
	8.1.6.1 Simple Format for Coded Content .....	47
	8.1.6.2 Complex Coded Content .....	50
	8.1.6.3 Managing Coded Content during Template Editing .....	50
	8.1.7 Merging Data into Report Templates.....	50
155	8.1.8 Relationships among Templates.....	51

## Introduction to this Supplement

160 This supplement describes the Management of Radiology Report Templates (MRRT) Profile. It specifies a data model for templates that will serve as a format for how templates can be transmitted between systems. It also specifies the desirable and common template features that reporting applications may support.

## Open Issues and Questions

- 165 1. The profile currently specifies that the **src** attribute of an **embed** element shall contain the embedded template's OID concatenated with “.html”. This facilitates easy rendering of embedded templates by assigning the embedded template a file name matching its OID. Should the embed statement use just the OID string instead?
- 170 2. Should the **type** attribute of an **embed** element contain a more specialized **type** than “text/html”, such as “**IMAGE\_REPORT\_TEMPLATE**”. If so, IHE will need to apply for a new type.

## Closed Issues

- 175 1. We reviewed RFD and XForms as possible alternative to HTML5 and they were judged less appropriate. HTML5 (<http://www.w3.org/TR/html51/>) was selected because, like radiology templates, it strikes a balance between expression of coded content and description of a user interface and the related data capture methods. HTML5 is increasingly used as a method for displaying clinical images, facilitating the construction of multi-media reports in the future.
- 180 2. The subset of HTML5 used shall be valid XML (e.g., the appropriate close tags shall be used).
- 185 3. What are CDA<sup>®1</sup> limits on section recursion? None.
4. An interoperable mechanism of retrieval of Merge fields is out of scope.
5. How should applications handle associated text, which when edited, calls into question associated coded entries (e.g., when the user negates text that is semantically linked to a field)? Clarifying text added to Section 8.1.6.3 describing possible application behavior in response to edited text with associated coded content. Span tag mechanism makes association between coded template text and coded content clear.
- 190 6. What are the semantics of inheritance among templates? What other relationships should be specified between templates, if any? This functionality will be handled by inclusion of templates in other templates. Only specified relationship is “deprecated by”. See RAD TF-3:8.1.8.

---

<sup>1</sup> CDA is the registered trademark of Health Level Seven International.

7. Should templates be used to validate report instances? Are there any compelling use cases for this functionality? No compelling use cases were presented. In any case, this would be better addressed using report instance templates, not report authoring templates described in this profile.
- 195 8. We have not identified any security issues. Are there any? We have addressed HTTPS in the profile. Because we included SSL, the profile security issues are mitigated. The remaining security issues are out of scope, and relate to report instances that may contain PHI, or merge field access.
- 200 9. The draft profile requires a header (title) for each section. Are there use cases where this is a bad idea? Closed. No use cases were presented.
10. Is there a need to have a different section or template attribute to represent the name (rather than “title” or “header”)? No use cases were presented.
11. Should the coded content in the template attributes section follow the existing CDA format, essentially serving as a mechanism to pass coded content to a report instance? Yes. There is no other practical mechanism to express coded content using HTML tags.
- 205 12. Should the Report Template Creator be able to retrieve templates and if so for what use case? Yes. Retrieve transaction added as optional for Template Creator. Use case is to edit or include existing templates.
13. Should caching for the Retrieve Imaging Report Template transaction be forbidden? No. Profile remains silent on this issue.
- 210 14. The Store Imaging Report Template transaction proposes the use of HTTP PUT. Is this the appropriate service? Should a POST be used instead? Are the proposed parameters for the transaction appropriate? What response codes are necessary? Closed. A POST should not be used. Because we can update a template with header information, PUT is appropriate. Parameters and response codes have been revised.
- 215 15. What should we call the templates described in this profile to distinguish them from CDA report instance templates? Report authoring templates versus report instance templates. The first paragraph was modified to clarify this distinction.
16. Should correspondence be enforced between `title` in the `head` element and the `dc:title` in the Dublin Core? Yes. Clarified in profile text.
- 220 17. Is there a value in having more specific dates than the Dublin Core offers, (e.g., creation date, modification date, release date)? Because each new template version must have a new UID, each unique template does not have a life cycle. Closed. These dates express work flow information related to report template creation. This is best stored and managed elsewhere, rather than in the template itself.
- 225 18. Should we manage versioning and lifecycle of templates, and if so, how? No. However, the profile provides a template attribute that signifies the lifecycle stage of the template:

- DRAFT, ACTIVE, RETIRED. Applications could extend this formalism based on site preferences.
- 230 19. What are the use cases for identifying users and provider groups who are the intended users of a template? Closed. This information is important to store in the templates themselves so it can be queried easily and migrated easily between systems.
- 235 20. In the Query Templates transaction, should the Responder simply return entire templates? No. It should only return template metadata so the Requester can choose the template(s) necessary, to conserve bandwidth / processing.
- 240 21. Is the ability to trigger a template by selecting a menu item (Section 8.1.4) necessary, sufficient, or excessive? Necessary but not sufficient. An inclusion mechanism is described so templates can be included by reference into other templates, even when not in response to selection of a menu item.
- 245 22. How should querying for coded values work? Is specifying the coding system required? If so, how should it be specified? For example, within the same parameter value separated by a colon? I.e., codingValue= RADLEX:RID6434 as opposed to codingSystem=RADLEX&codingValue=RID6434. This has been clarified in the text.
- 250 23. Should the Query Templates transaction explain more succinctly how AND OR operations work? Should the lowerDate and upperDate logic be more thoroughly described? This has been clarified in the text.
- 250 24. Should it be possible to include templates in other templates by reference? Yes. This creates a potential conflict of namespaces between the two templates. To resolve the conflict, identifiers in the embedded template shall be prefixed with the `template` element of the embedded template.



## General Introduction

*Update the following Appendices to the General Introduction as indicated below. Note that these are not appendices to Volume 1.*

### Appendix A – Actor Summary Definitions

255 *Modify Report Creator and add the following two actors to the IHE Technical Frameworks General Introduction list of Actors:*

Actor	Definition
Report Creator	A system that generates and transmits draft (and optionally, final) diagnostic reports, <del>presenting them as DICOM Structured Reporting Objects</del> . It may also retrieve work list entries for reporting steps from the Report Manager and provide notification of completion of the step, allowing the enterprise to track the status of an awaited report.
Report Template Manager	A system that provides storage and management of report templates.
Report Template Creator	A system that enables a user to create and edit report templates.

### Appendix B – Transaction Summary Definitions

260 *Add the following transactions to the IHE Technical Frameworks General Introduction list of Transactions:*

Transaction	Definition
Retrieve Imaging Report Template [RAD-103]	A Requester retrieves a template from a Responder.
Store Imaging Report Template [RAD-104]	A Sender stores a report template to a Receiver.
Query Imaging Report Templates [RAD-105]	A Requester queries for a list of templates from a Responder.

## Glossary

*Add the following glossary terms to the IHE Technical Frameworks General Introduction Glossary:*

265 None

## Volume 1 – Profiles

### 33 Management of Radiology Report Templates (MRRT) Profile

270 The MRRT Profile concerns the use of imaging report templates to create diagnostic imaging reports. This profile distinguishes between *report authoring templates*, which are templates used by radiologists to guide the creation of a clinical imaging report, and *report instance templates*, which describe technical constraints on the structure and content of imaging report instances, such as the constraints described in and XML schema or the HL7<sup>®2</sup> Clinical Document Architecture. This profile applies to the former, *report authoring templates*, and describes methods for the formatting of imaging report templates and the management of their transport 275 between template libraries and report creation systems. Specifically, this profile describes an enhanced feature set for report authoring templates, delineates how such templates from a vendor-agnostic template library could be used immediately by a reporting system, and provides a format for migration of templates between reporting systems.

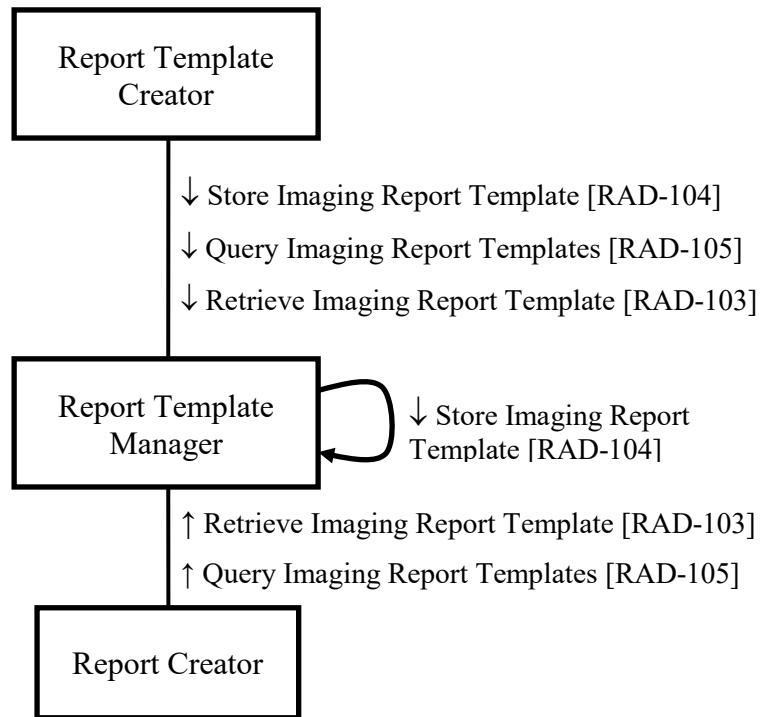
#### 33.1 MRRT Actors, Transactions, and Content Modules

280 This section defines the actors, transactions, and content modules in the MRRT Profile. General definitions of actors are given in the Technical Frameworks General Introduction Appendix A at [http://ihe.net/Technical\\_Frameworks](http://ihe.net/Technical_Frameworks).

285 Figure 33.1-1 shows the actors directly involved in the MRRT Profile and the relevant transactions between them. If needed for context, other actors that may be indirectly involved due to their participation in other related profiles are shown in dotted lines. Actors that have a mandatory grouping are shown in conjoined boxes.

---

<sup>2</sup> HL7 is the registered trademark of Health Level Seven International.



290

**Figure 33.1-1: MRRT Actor Diagram**

Table 33.1-1 lists the transactions for each actor directly involved in the MRRT Profile. To claim compliance with this profile, an actor shall support all required transactions (labeled “R”) and may support the optional transactions (labeled “O”).

**Table 33.1-1: MRRT Profile - Actors and Transactions**

Actors	Transactions	Optionality	Reference
Report Template Manager	Retrieve Imaging Report Template [RAD-103]	R	RAD TF-3: 4.103
	Store Imaging Report Template [RAD-104]	R	RAD TF-3: 4.104
	Query Imaging Report Templates [RAD-105]	R	RAD TF-3: 4.105
Report Creator	Retrieve Imaging Report Template [RAD-103]	R	RAD TF-3: 4.103
	Query Imaging Report Templates [RAD-105]	O	RAD TF-3: 4.105

Actors	Transactions	Optionality	Reference
Report Template Creator	Store Imaging Report Template [RAD-104]	R	RAD TF-3: 4.104
	Retrieve Imaging Report Template [RAD-103]	O	RAD TF-3: 4.103
	Query Imaging Report Templates [RAD-105]	O	RAD TF-3: 4.105

295

### 33.1.1 Actor Descriptions and Actor Profile Requirements

#### 33.1.1.1 Report Template Manager

The Report Template Manager shall support Store Imaging Report Template [RAD-104] as both the Sender and Receiver.

### 300 33.2 MRRT Actor Options

Options that may be selected for each actor in the MRRT Profile, if any, are listed in Table 33.2-1. Dependencies between options when applicable are specified in notes.

**Table 33.2-1: Management of Radiology Report Templates - Actors and Options**

Actor	Option Name	Reference
Report Template Manager	No options defined	-
Report Creator	No options defined	-
Report Template Creator	No options defined	-

### 305 33.3 MRRT Required Actor Groupings

None

### 33.4 MRRT Overview

#### 33.4.1 Concepts

310 A template is a document with a preset structure, used as a starting point for a Report Creator, so that the structure does not have to be recreated each time it is used. A template describes how a Report Creator should interact with a user to create a report instance.

315 For example, a radiologist may use a speech recognition system to create a narrative report describing the interpretation of a diagnostic imaging study. The speech recognition system assists the radiologist in applying templates during the reporting process. The radiologist also may edit the text of the report using that system.

A previously published [IHE whitepaper on the management of radiology report templates](#) provides more detail on how radiologists typically employ imaging report templates.

### 33.4.2 Use Cases

#### 33.4.2.1 Use Case #1: New Template Storage

##### 320 33.4.2.1.1 New Template Storage Use Case Description

A radiologist may need a template to help create a report for a specific study. If such a template is not available in an accessible template library, the radiologist may use a Report Template Creator to create, then edit, a template that serves the need. That template is stored in a Report Template Manager where it is available for later retrieval by a Report Creator. In some cases a single application may serve as both Report Template Creator and Report Template Manager. In other cases the Report Template Creator may be a separate application.

##### 33.4.2.1.2 New Template Storage Process Flow

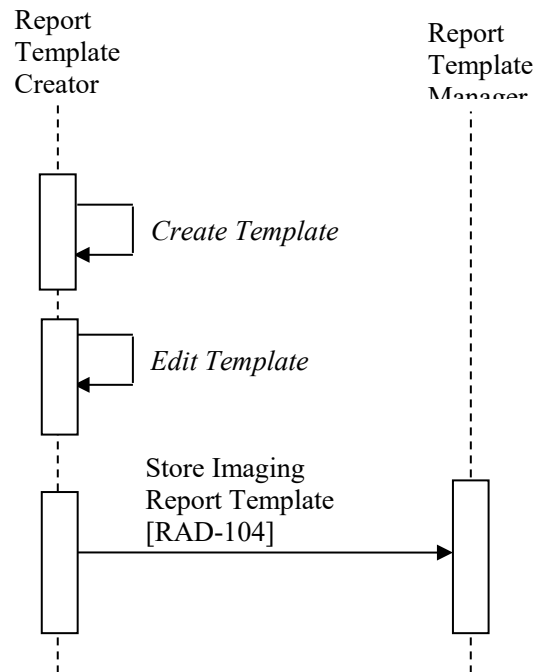


Figure 33.4.2.1.2-1: New Template Storage Process Flow in MRRT Profile

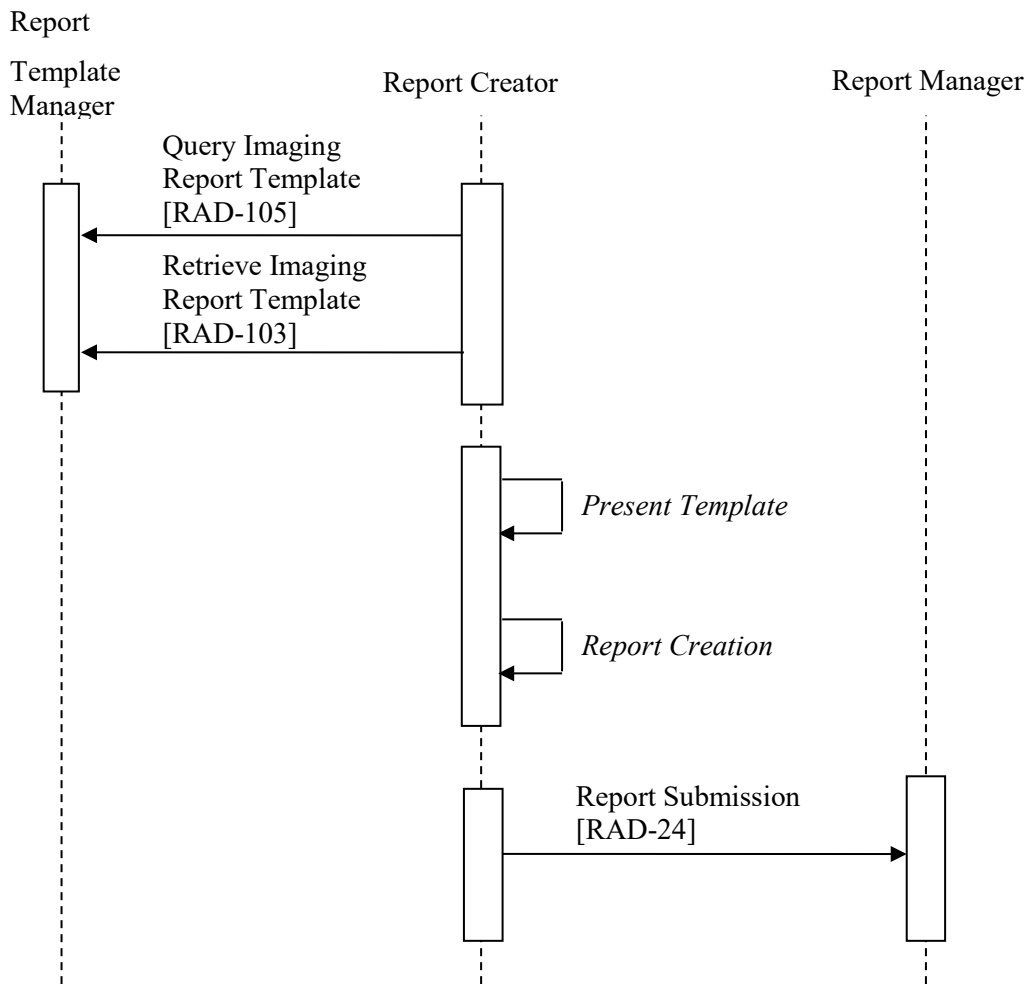
##### 330 33.4.2.2 Use Case #2: Template Import

##### 33.4.2.2.1 Template Import Use Case Description

A radiologist may need a template to help create a report for a specific study. The Report Creator queries for and retrieves an appropriate template or templates from the Report Template

335 Manager, either based on the users request or an automated algorithm. In some cases a single application may serve as both Report Template Manager and Report Creator, but in other cases the Report Template Manager may be maintained by a radiology practice, a reporting vendor, or a professional group. After selecting the template, the user creates a report based on the template.

**33.4.2.2.2 Template Import Process Flow**



340 **Figure 33.4.2.2-1: Template Import Process Flow in MRRT Profile**

Note: Report Submission [RAD-24] is not part of the MRRT Profile. It is shown to provide context.

### 33.4.2.3 Use Case #3: Template Migration

#### 33.4.2.3.1 Template Migration Use Case Description

345 If a radiology practice elects to change reporting vendors, the practice will need to transmit its templates from their current Report Template Manager to a new Report Template Manager. They would use the Store Imaging Report Template transaction to migrate the templates from their old Report Template Manager to the new Report Template Manager. This eliminates the need for custom programming to reverse-engineer the template format of the old vendor.

#### 350 33.4.2.3.2 Template Migration Process Flow

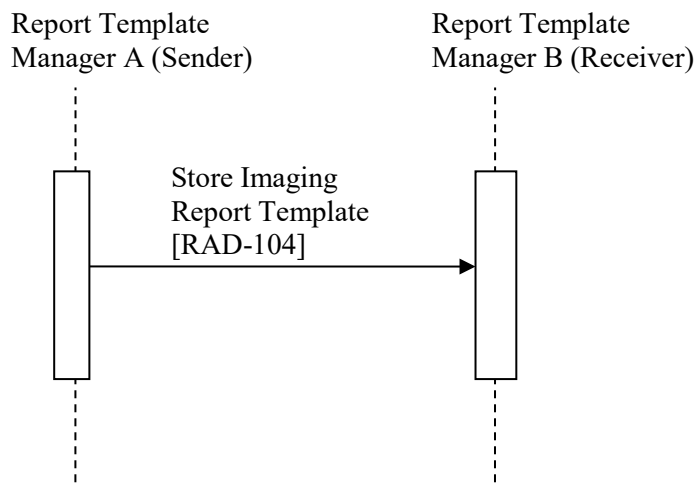


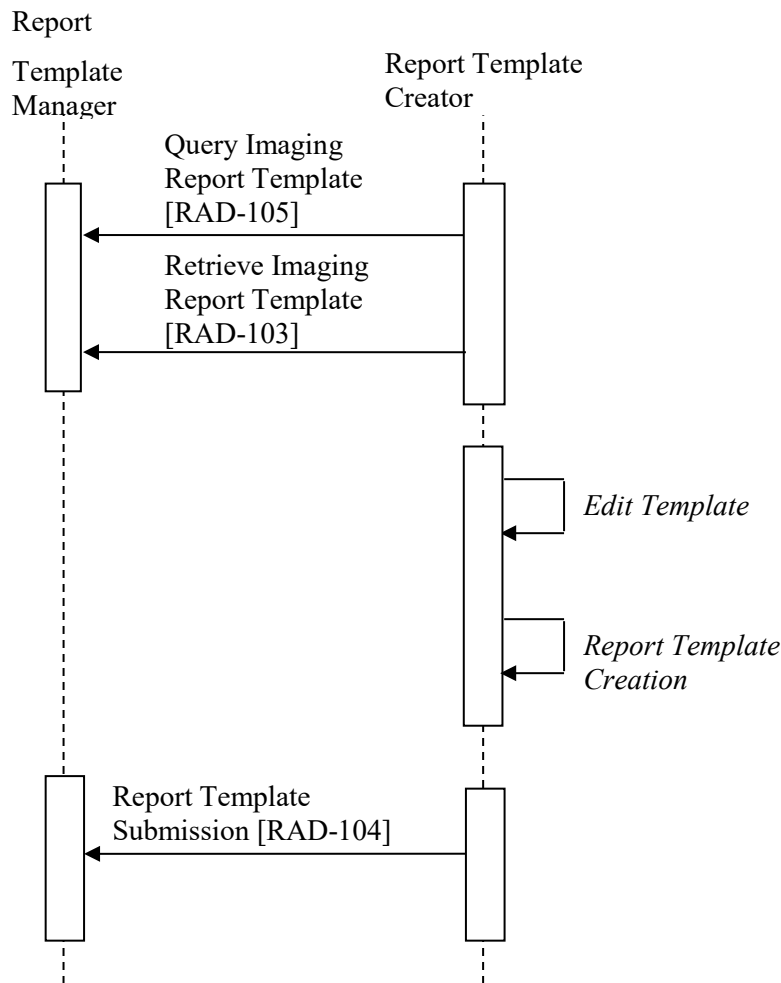
Figure 33.4.2.3.2-1: Template Migration Process Flow in MRRT Profile

### 33.4.2.4 Use Case #4: Build Template

#### 33.4.2.4.1 Build Template Description

355 Similar to Use Case #1, a radiologist may need a template to help create a report for a specific study. The radiologist may use a Report Template Creator to create, then edit, a template that serves the need. However, this template utilizes common pieces from other templates. That template is stored in a Report Template Manager where it is available for later retrieval by a Report Creator.

360 **33.4.2.4.2 Template Import Process Flow**



**Figure 33.4.2.4.2-1: Build Template Process Flow in MRRT Profile**

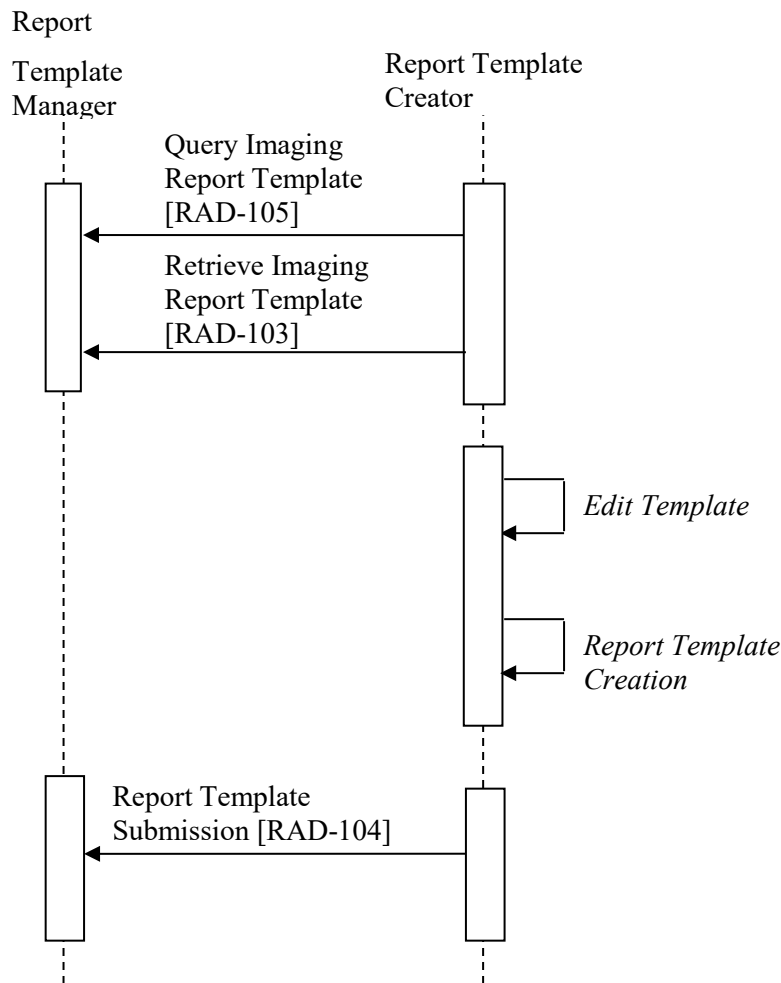
**33.4.2.5 Use Case #5: Manage Template**

**33.4.2.5.1 Manage Template Description**

365 A radiologist has decided that a particular template should be retired, due to replacement to a new template. The radiologist may use a Report Template Creator to edit a template that changes the metadata. That template is stored in a Report Template Manager where it is available for later retrieval by a Report Creator.



### 33.4.2.5.2 Manage Template Process Flow



370

Figure 33.4.2.5.2-1: Manage Template Process Flow in MRRT Profile

### 33.5 MRRT Security Considerations

None

### 33.6 MRRT Cross Profile Considerations

375 **SINR - Simple Image and Numeric Report.** A Report Creator in SINR might be grouped with a Report Template Manager in the MRRT Profile, yielding a unified reporting application that manages its own templates.

The transactions outlined here generally will occur before the transactions described in SINR and shown in RAD TF-1: Figure 9.3-1.

380

## Volume 3 – Transactions (continued)

### 4.103 Retrieve Imaging Report Template [RAD-103]

#### 4.103.1 Scope

This transaction is used to retrieve a template from a Report Template Manager in the proper format.

385

#### 4.103.2 Actor Roles

Table 4.103.2-1: Actor Roles

<b>Role:</b>	<b>Requester:</b> Requests a template or templates from the Responder
<b>Actor(s):</b>	The following actor may play the role of Requester: <ul style="list-style-type: none"><li>• Report Creator</li></ul>
<b>Role:</b>	<b>Responder:</b> Provides a template or templates in response to the request
<b>Actor(s):</b>	The following actor may play the role of Responder: <ul style="list-style-type: none"><li>• Report Template Manager</li></ul>

Transaction text specifies behavior for each role. The behavior of specific actors may also be specified when it goes beyond that of the general role.

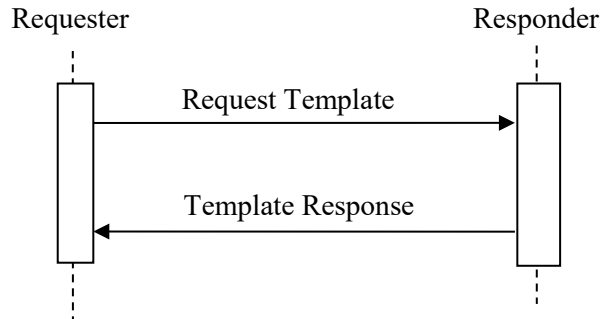
390

#### 4.103.3 Referenced Standards

- IETF RFC2616 HyperText Transfer Protocol HTTP/1.1
- Extensible Markup Language (XML) 1.0 (Second Edition). W3C Recommendation 6 October 2000. <http://www.w3.org/TR/REC-xml>.
- Dublin Core Metadata Element Set, standardized as ISO Standard 15836: 2009 and ANSI/NISO Standard Z39.85-2012. <http://dublincore.org/documents/dces/>

395

#### 4.103.4 Interaction Diagram



**Figure 4.103.4-1: Interaction Diagram for Retrieve Imaging Report Template [RAD-103]**

##### 4.103.4.1 Request Template Message

400 The Requester sends a message to the Responder indicating the templates it would like to receive.

A Responder shall support handling such messages from more than one Requester. A Requester may choose to support making requests to more than one Responder.

##### 4.103.4.1.1 Trigger Events

- 405
1. A Requester needs to collect templates for later use in anticipation of reporting in the future.
  2. The user of a Requester, such as a Report Creator, invokes a template.
  3. A Requester needs to retrieve a template that has been referenced by another template.

##### 4.103.4.1.2 Message Semantics

410 The message is an HTTP GET request.

The HTTP request shall include the following parameters to identify the template to be returned. All parameter names and values are case-sensitive.

**Table 4.103.4.1.2-1: HTTP Path Parameters**

Parameter Name	REQ	Description	Values
<code>templateUID</code>	R	Identifies template’s UID as known to both actors, expressed by the <code>dterms.identifier</code> element shown in RAD TF-3: Table 8.1.1-1.	This value shall be a properly defined Object identifier (OID) as specified in ITI TF-2x: Appendix B.

415 The only binding required for both the Requester and Responder is the binding to the HTTP-GET. In this binding the sample message will be formatted as follows:

`http://<location>/IHETemplateService/<templateUID>`

420 The `<location>` part of the URL shall contain the host name, an optional port address, and may be followed by an optional path. The remainder of the URL, including `IHETemplateService` and the following request parameters shall not be changed. See the discussion about location in ITI TF-2a: 3.11.4.1.2 Message Semantics.

If necessary, the Requester may perform the request to the web service utilizing HTTPS protocol. The Responder shall respond using HTTPS if requested.

425 The Responder may return HTTP redirect responses to a request. The Requester can expect to receive an error response, or the data requested, or a request to look elsewhere for the data. The Requester shall follow redirects, but if a loop is detected, it may report an error.

#### 4.103.4.1.3 Expected Actions

430 The Responder shall parse the request and create a response containing the templates meeting the parameters of the request in the proper format. If multiple requests are received, each is handled in sequence.

The Responder shall provide a response message header containing the appropriate status code indicating success, warning, or failure as shown in Table 4.103.4.1.3-1.

**Table 4.103.4.1.3-1: HTTP Responses**

Service Status	HTTP1.1 Status Codes	Description
Failure (see note 2)	503 – Busy	This indicates that the Responder was unable to provide the template because it was out of resources.
	404 – Not Found	This indicates that the Responder was unable to provide the template because it did not exist on the responder at the time of the request.
	401 - Unauthorized	This indicates that the Responder refused to provide a template because authentication credentials were not provided or not sufficient.
	400 – Bad Request	This indicates that the Responder was unable to provide the template because the template UID is missing or corrupt.
Success	200 – OK	This indicates that the request was successful and the Responder will provide the template.

435 Note 1: Other HTTP response codes may be returned by the Responder, indicating conditions outside of the scope of this transaction.

Note 2: It is recommended that the Responder complement the returned error code with a human readable description of the error condition.

440 If an error condition cannot be automatically recovered, at a minimum, the error should be displayed to the user by the Requester.

The Requester may wish to request any templates that are embedded in the response (see RAD TF-3: 8.1.4) immediately, rather than retrieve embedded templates on demand later when the Responder may not be available.

#### **4.103.4.2 Template Response Message**

445 The Responder transmits the requested templates to the Requester.

##### **4.103.4.2.1 Trigger Events**

The Template Response message is created in response to a Responder receiving a Request Template message.

##### **4.103.4.2.2 Message Semantics**

450 The message is a document in a HTTP GET response.

##### **4.103.4.2.3 Expected Actions**

455 The Responder shall format the document according to content definition in RAD TF-3: 8.1, and return it in the HTTP response. The document shall be processed according to the features, configuration, and business logic of the Requester. Possibilities include making the template accessible to the user.

#### **4.103.5 Security Considerations**

Although the content of templates is not typically protected information, for consistency with other transactions on the client, which likely will involve protected information, it is reasonable to expect support for HTTPS.

##### **4.103.5.1 Security Audit Considerations**

None

### **4.104 Store Imaging Report Template [RAD-104]**

#### **4.104.1 Scope**

This transaction is used to store templates in the proper format on another system.

#### **4.104.2 Actor Roles**

**Table 4.104.2-1: Actor Roles**

<b>Role:</b>	<b>Sender:</b> Sends and requests storage of templates
<b>Actor(s):</b>	The following actors may play the role of Sender: <ul style="list-style-type: none"> <li>• Report Template Creator</li> <li>• Report Template Manager</li> </ul>
<b>Role:</b>	<b>Receiver:</b> Receives and stores templates
<b>Actor(s):</b>	The following actor may play the role of Receiver: <ul style="list-style-type: none"> <li>• Report Template Manager</li> </ul>

470 Transaction text specifies behavior for each role. The behavior of specific actors may also be specified when it goes beyond that of the general role.

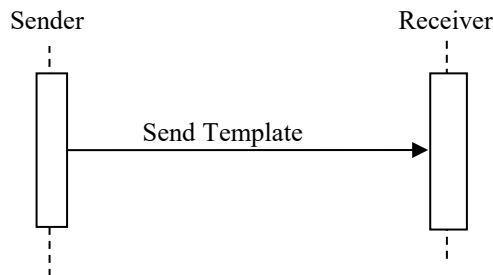
#### 4.104.3 Referenced Standards

IETF RFC2616 HyperText Transfer Protocol HTTP/1.1

Extensible Markup Language (XML) 1.0 (Second Edition). W3C Recommendation 6 October 2000. <http://www.w3.org/TR/REC-xml>.

475 Dublin Core Metadata Element Set, standardized as ISO Standard 15836: 2009 and ANSI/NISO Standard Z39.85-2012. <http://dublincore.org/documents/dces/>

#### 4.104.4 Interaction Diagram



**Figure 4.104.4-1: Interaction Diagram for Store Imaging Report Template [RAD-104]**

##### 480 4.104.4.1 Send Template Message

The Sender provides the template to a Receiver.

A Receiver shall support handling such messages from more than one Sender. A Sender may choose to support storing templates to more than one Receiver.

**4.104.4.1.1 Trigger Events**

- 485
1. A Report Template Manager (acting as a Sender) needs to transmit a template to another Report Template Manager (acting as a Receiver) for storage.
  2. A Report Template Creator (acting as a Sender) needs to store a template that it has created or updated.

**4.104.4.1.2 Message Semantics**

490 The message is an HTTP PUT request. The Sender shall format the document according to content definition in RAD TF-3: 8.1.

The HTTP request shall include the following parameters to identify the template to be stored. All parameter names and values are case-sensitive.

**Table 4.104.4.1.2-1: HTTP Path Parameters**

Parameter Name	REQ	Description	Values
<b>templateUID</b>	R	Identifies template’s UID as known to both actors.	<p>This value shall be a properly defined Object identifier (OID) as specified in ITI TF-2x: Appendix B.</p> <p>The value of <b>templateUID</b> shall match the value of the <code>dcterms.identifier</code> attribute in the report template’s metadata. See RAD TF-3: Table 8.1.1-1.</p> <p>If the Sender has changed the <b>body</b> element of an existing report template, it shall create a new <b>templateUID</b> for the template.</p> <p>If the Sender updates elements in the <b>head</b> element of a report template, it is permitted to retain the value of <b>templateUID</b>.</p> <p>Note 1: Replacement of templates is intended to allow the Sender to update metadata (for example changing the status from ACTIVE to RETIRED) but is not intended to permit modification of the template content itself. If the content of the <b>body</b> element of the template was modified, the Sender will have assigned a new value for <code>dcterms.identifier</code>.</p>

495

The only binding required for both the Sender and Receiver is the binding to the HTTP-PUT. In this binding the sample message will be formatted as follows:

**http://<location>/IHETemplateService/<templateUID>**

500 The <location> part of the URL shall contain the host name, an optional port address, and may be followed by an optional path. The remainder of the URL, including **IHETemplateService** and the following request parameters shall not be changed.

If necessary, the Sender may perform the request to the web service utilizing HTTPS protocol. In this case, the Receiver shall respond using HTTPS.

505 The Receiver may return HTTP redirect responses to a request. The Sender can expect to receive an error response, or the data requested, or a request to look elsewhere for the data. The Sender shall follow redirects, but if a loop is detected, it may report an error.

#### 4.104.4.1.3 Expected Actions

The Receiver shall accept the request to store the template. If multiple requests are received, each is handled in sequence.

510 The Receiver shall store all metadata in the `head` element along with the complete contents of the report template contained in the `body` element. See RAD TF-3:8.1.

- If the `dcterms.identifier` of the template does not already exist on the Receiver, the Receiver shall store the complete contents of the new template.

515 If the `dcterms.identifier` of the template already exists on the Receiver, the Receiver shall replace the existing template with the received template, including any updated values for the metadata attributes.

The Receiver shall provide a response message header containing the appropriate status code indicating success, warning, or failure as shown in Table 4.104.4.1.3-1.

**Table 4.104.4.1.3-1: HTTP Responses**

Service Status	HTTP1.1 Status Codes	Description
Failure (see note 2)	503 – Busy	This indicates that the Responder was unable to store the template because it was out of resources.
	422 – Unprocessable Entity	This indicates that the Responder was unable to store the template because the template does not conform to RAD TF-3: 8.1.
	401 - Unauthorized	This indicates that the Responder refused to store the template because authentication credentials were not provided or not sufficient.
	400 – Bad Request	This indicates that the Responder was unable to store the template because the template UID is missing or corrupt or did not match the value of the <code>dcterms.identifier</code> attribute in the report template’s metadata. See RAD TF-3: Table 8.1.1-1.
Success	200 – OK	This indicates that the request was successful and the Responder has stored the template.



520 Note 1: Other HTTP response codes may be returned by the Receiver, indicating conditions outside of the scope of this transaction.

Note 2: It is recommended that the Receiver complement returned error code with a human readable description of the error condition.

525 If an error condition cannot be automatically recovered, at a minimum, the error should be displayed to the user by the Sender.

#### 4.104.5 Security Considerations

Although the content of templates is not typically protected information, for consistency with other transactions on the client, which likely will involve protected information, it is reasonable to expect support for HTTPS.

#### 530 4.104.5.1 Security Audit Considerations

None

### 4.105 Query Imaging Report Template [RAD-105]

#### 4.105.1 Scope

535 This transaction is used to query templates from a Report Template Manager in the proper format.

#### 4.105.2 Actor Roles

**Table 4.105.2-1: Actor Roles**

<b>Role:</b>	<b>Requester:</b> Requests a filtered list of templates from the Responder
<b>Actor(s):</b>	The following actor may play the role of Requester: <ul style="list-style-type: none"><li>• Report Creator</li></ul>
<b>Role:</b>	<b>Responder:</b> Provides a list of templates in response to the request
<b>Actor(s):</b>	The following actor may play the role of Responder: <ul style="list-style-type: none"><li>• Report Template Manager</li></ul>

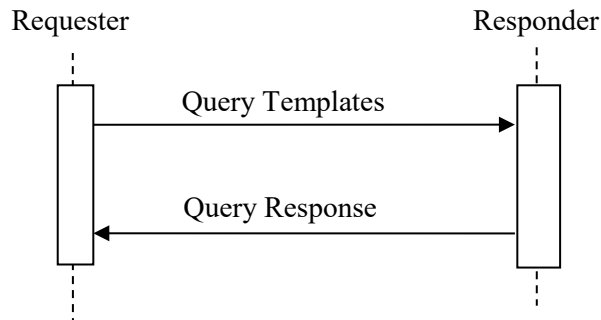
540 Transaction text specifies behavior for each role. The behavior of specific actors may also be specified when it goes beyond that of the general role.

#### 4.105.3 Referenced Standards

- IETF RFC2616 HyperText Transfer Protocol HTTP/1.1

- Extensible Markup Language (XML) 1.0 (Second Edition). W3C Recommendation 6 October 2000. <http://www.w3.org/TR/REC-xml>.
- Dublin Core Metadata Element Set, standardized as ISO Standard 15836: 2009 and ANSI/NISO Standard Z39.85-2012. <http://dublincore.org/documents/dces/>

#### 4.105.4 Interaction Diagram



**Figure 4.105.4-1: Interaction Diagram for Query Imaging Report Templates [RAD-105]**

#### 550 4.105.4.1 Query Templates Message

The Requester sends a message to the Responder indicating the list of templates it would like to receive.

A Responder shall support handling such messages from more than one Requester. A Requester may choose to support making requests to more than one Responder.

#### 555 4.105.4.1.1 Trigger Events

1. A Requester needs to find templates for later use in anticipation of selecting an appropriate template for reporting in the future.
2. The user of a Requester, such as a Report Creator, invokes a template query.

#### 4.105.4.1.2 Message Semantics

560 The message is an HTTP GET request.

To filter the template matches to be returned, the HTTP request shall include one or more of the following parameters. All parameter names and values are case-sensitive.

All parameters shall be supported by the Responder, and are optional for the Requester.

565

**Table 4.105.4.1.2-1: HTTP Query Parameters**

Parameter Name	REQ	Description	Values
<b>title</b>	O	Wildcard query of the <b>dcterms.title</b> tag.	This value shall be a string.
<b>identifier</b>	O	Exact query of the <b>dcterms.identifier</b> tag.	This value shall be a properly defined Object identifier (OID) as specified in ITI TF-2x: Appendix B.
<b>creator</b>	O	Wildcard query of the <b>dcterms.creator</b> tag.	This value shall be a string.
<b>publisher</b>	O	Wildcard query of the <b>dcterms.publisher</b> tag.	This value shall be a string.
<b>license</b>	O	Wildcard query of the <b>dcterms.license</b> tag.	This value shall be a string.
<b>lower_date</b>	O	Query the date of the template for values on or after the specified lower date. See Note 1.	This value shall be encoded in the XML primitive date format. Multiple instances of this parameter are not permitted.
<b>upper_date</b>	O	Query the date of the template for values on or before the specified upper date. See Note 1.	This value shall be encoded in the XML primitive date format. Multiple instances of this parameter are not permitted.
<b>language</b>	O	Wildcard query of the <b>dcterms.language</b> tag.	This value shall be an ISO 639 two-letter language code.
<b>top_level_flag</b>	O	Exact query of the <b>top-level-flag</b> tag.	This value shall be an xsd:Boolean.
<b>status</b>	O	Exact query of the <b>status</b> tag.	This value shall be one of: <b>DRAFT</b> , <b>ACTIVE</b> , or <b>RETIRED</b>
<b>code_value</b>	O	Exact query of the entry/coding_schemes/coding_scheme <b>designator</b> tag and entry/term/code <b>value</b> tag.	This value shall be a string containing the coding scheme from which the code value was drawn, and the code value itself separated by a colon. See Note 2.
<b>code_meaning</b>	O	Wildcard query of the entry/term/code <b>meaning</b> tag.	This value shall be a string.
<b>limit</b>	O	Limits the results returned to a maximum number. If omitted, all matching results shall be returned.	This value shall be an integer.
<b>offset</b>	O	Skips the first number of matching results. If omitted, no results will be skipped.	This value shall be an integer.
<b>sort</b>	O	Returns the results in alphabetical order of a specified field. If omitted, results are ordered by title.	This value shall be a string, being one of the query parameters aside from limit, offset, or sort.

Note 1: **Lower\_date** and **upper\_date** are used to constrain the date of the template. For example, a **lower\_date** of 2010-01-01 and an **upper\_date** of 2010-12-31 will return all templates with a date in the year 2010. The query is inclusive of the date specified. If the value passed is not in XML primitive date format, an HTTP 400 error will be returned.

Note 2: When searching for code value, the coding system must also be specified. This is done by concatenating the **coding\_scheme\_designator**, a colon, and the **code\_value**. For example, when searching in RadLex (2.16.840.1.113883.6.256) for Computed Tomography (RID10321), the **code\_value** to be queried for would be “2.16.840.1.113883.6.256:RID10321”.

575 The only binding required, for both the Requester and Responder, is the binding to the HTTP-GET. In this binding the Requester shall format the Query Templates message as follows:

```
http://<location>/IHETemplateService/?[parameter1_name]=[parameter1 value]&
[parameter2_name]=[parameter2 value]
```

580 The <location> part of the URL shall contain the host name of the Responder, an optional port address, and may be followed by an optional path. The remainder of the URL, including **IHETemplateService** and the following request parameters shall not be changed. See the discussion about location in ITI TF-2a: 3.11.4.1.2 Message Semantics.

If no search parameters are provided, all **ACTIVE** templates match.

585 For the parameters specified as wildcard search, a template matches if the text string in the parameter value appears in the corresponding attribute of the template. Wildcard matching is insensitive to case. For example, searching the title for “abdomen” would match templates with “CT Abdomen”.

590 Specifying multiple, different parameters indicates an AND relation, meaning that both parameter values must be present for the template to match. For example, requesting that the title contains “CT” and the publisher contains “Hospital” would return only templates that met both of those criteria. However, specifying the same parameter multiple times indicates an OR relation, where only one of the parameter values must be present in the template. For example, requesting that the title contains “CT” or the title contains “US” would return templates that match either of those criteria.

595 The Requester may perform the request to the web service utilizing HTTPS protocol. The Responder shall respond using HTTPS if requested.

The Responder may return HTTP redirect responses to a request. The Requester can expect to receive an error response, or the data requested, or a request to look elsewhere for the data. The Requester shall follow redirects, but if a loop is detected, it may report an error.

#### 600 **4.105.4.1.3 Expected Actions**

The Responder shall parse the request and create a response containing the template headers matching the parameters of the request as specified in Section 4.105.4.2.2.

The Responder shall handle multiple requests.

605 The Responder shall return the appropriate status code indicating success, warning, or failure as shown in Table 4.105.4.1.3-1.

**Table 4.105.4.1.3-1: HTTP Responses**

Service Status	HTTP1.1 Status Codes	Description
Failure (see note 2)	503 – Busy	This indicates that the Responder was unable to perform the query because it was out of resources.
	401 - Unauthorized	This indicates that the Responder refused to return results because authentication credentials were not provided or not sufficient.
	400 – Bad Request	This indicates that the Responder was unable to provide the template list because one or more of the parameters are corrupt.
Success	200 – OK	This indicates that the request was successful and the Responder will list matching templates.

Note 1: Other HTTP response codes may be returned by the Responder, indicating conditions outside of the scope of this transaction.

610

Note 2: It is recommended that the Responder complement the returned error code with a human readable description of the error condition.

#### 4.105.4.2 Template Response Message

The Responder transmits the requested template headers to the Requester.

615

##### 4.105.4.2.1 Trigger Events

The Template Response message is created in response to a Responder receiving a Query Templates message.

##### 4.105.4.2.2 Message Semantics

The Template Response message is an HTTP GET response.

620

The Template Response Message is expressed in XML.

A Responder shall format the response as described below. The Template Response message:

1. Shall begin with exactly one [1..1] XML declaration: `<?xml version="1.0" encoding="UTF-8"?>` declaring the character set used.
2. Shall contain exactly one [1..1] `templates` element.

625

- a. The `templates` element may contain [0..\*] `template` elements, one for each matching report template.
  - i. The `template` element shall contain an `href` attribute to indicate a URL to retrieve the template.

- 630
- ii. The **template** element shall contain exactly one [1..1] **title** element containing the name of the template.
  - iii. The **template** element shall contain exactly one [1..1] **meta** element declaring the character set used: `<meta charset="UTF-8">`.
  - iv. The **template** element may contain style information formatted according to HTML5 standards, using the **style** element for internal CSS style elements and the **link** element for CSS files.
  - 635
  - v. The **template** element shall contain one or more [1..\*] **meta** elements encoding Dublin Core metadata attributes for the template, as shown in Table 4.104.4.2.2-1.
    - 640
    - 1. The **name** property of the **meta** element will be used to specify the template attribute.
    - 2. For Dublin Core template attributes, the “**dcterms**” namespace shall be used.
    - 3. The **content** property of the **meta** element will be used to specify the value of the template attribute.
  - 645
  - vi. The **template** element shall contain exactly one [1..1] **script** element containing the entire contents of the **script** element for the template.
  - vii. The **template** element shall comply with all other HTML5 constraints.

**Note:** The intent of each template node is to contain the contents of the head node of the actual template.

```
650 <?xml version="1.0" encoding="UTF-8"?>
    <templates>
        <template href="http://<location>/IHETemplateService/1.2.3.4.5">
            <title content="CT Brain"</title>
            <meta charset="UTF-8">
655         <meta name="dcterms.title" content="CT Brain" />
            <meta name="dcterms.identifier" content="1.2.3.4.5" />
            <meta name="dcterms.type" content="IMAGE_REPORT_TEMPLATE" />
            <meta name="dcterms.language" content="en" />
            <meta name="dcterms.publisher" content="Radiological Society of North
660 America (RSNA)" />
            <meta name="dcterms.rights" content="May be used freely, subject to
license agreement" />
            <meta name="dcterms.license"
content="http://www.radreport.org/license.pdf" />
665         <meta name="dcterms.date" content="2012-03-28" />
            <meta name="dcterms.creator" content="Flanders AE, et al." />
            <meta name="dcterms.contributor" content="Bozkurt S [coder]" />
            <meta name="dcterms.contributor" content="Kahn CE Jr [editor]" />
            <meta name="dcterms.contributor" content="American Society of
670 Neuroradiology (ASNR)" />
            <script>
                <template_attributes>
                    <top-level-flag>true</top-level-flag>
                    <status>ACTIVE</status>
675                 <coding_schemes>
                    <coding_scheme name="RADLEX"
designator="2.16.840.1.113883.6.256" />
                    </coding_schemes>
                    <term type="modality">
680                     <code meaning="computed tomography" value="RID10321"
scheme="RADLEX" />
                    </term>
                    <term type="body part">
685                     <code meaning="brain" value="RID6434" scheme="RADLEX" />
                    </term>
                </template_attributes>
            </script>
        </template>
690     <!--Additional template elements may appear here-->
</templates>
```

**Figure 4.105.4.2.2-1: Example of the Template Response message**

#### 4.105.4.2.3 Expected Actions

695 The Requester shall process the returned responses in a manner that is specific to its application. IHE does not mandate application-specific behavior but this may include, for example, rendering for the user the metadata received in the response and enabling the user to subsequently retrieve one of the templates using [RAD-103].

700 If more sophisticated queries are required – more than what is provided for in Section 4.105.4.1.2, it is expected that the Responder will be capable of processing a large set of template responses and performing further filtering internally.

If the Requester receives an HTTP response code other than 200-OK, and cannot automatically recover, at a minimum, the Requester should display the error to the user.

**4.105.5 Security Considerations**

705 Although the content of templates is not typically protected information, for consistency with other transactions on the client, which likely will involve protected information, it is reasonable to expect support for HTTPS.

**4.105.5.1 Security Audit Considerations**

None

710

**Editor:** Add the following rows to RAD TF-3: Table 5.1-2

**Table 5.1-2: IHE Radiology transactions and resulting ATNA trigger events**

IHE Radiology Transaction	ATNA Trigger Event(s)	Actor(s) that shall be able to record audit event
Patient Registration [RAD-1]	Patient-record-event	ADT Order Placer, DSS/OF – when PHI is presented
...		
<u>Retrieve Imaging Report Template [RAD-103]</u>	<u>None</u>	
<u>Store Imaging Report Template [RAD-104]</u>	<u>None</u>	
<u>Query Imaging Report Template [RAD-105]</u>	<u>None</u>	



## Volume 3 – Content Modules

715 *Add new Section to Volume 3*

### 8.1 Report Template Structure

720 The format for report templates is expressed in HTML5 with extensions. Some of the extensions, such as custom data attributes, are supported by HTML5, while others, such as coded content in XML format, are not. Whenever possible, existing HTML5 tags are used to express template content. All HTML5 tags shall be closed so the report template can be validated as XML. Except for two XML blocks at the end of the report template, the document can be validated using widely available HTML5 tools. Internal and external CSS style sheets may be used to render these templates. Inline styles are not permitted.

725 Although the format for report templates is expressed in HTML5, the Report Creator is not required to use an HTML5 rendering engine. HTML is simply a convenient method to express the concepts in the template. The Report Creator is required to expose the appropriate behavior, for example allow the user to select an item from a selection list.

730 Examples of template content are provided in the figures below. In addition, an example template and external style sheet are available on [the IHE ftp site](#).

Each template shall support the constraints described below. The template:

1. Shall begin with exactly one [1..1] HTML5 **DOCTYPE** declaration: `<!DOCTYPE html>`
2. Shall contain exactly one [1..1] **html** element.
  - a. The **html** element shall contain exactly one [1..1] **head** element.
    - 735 i. Identifiers in the **head** element shall use an underscore (“\_”) as separator.
    - ii. The **head** element shall contain exactly one [1..1] **title** element containing the name of the template. The value of the **title** element shall be the same as the **dcterms.title** element shown in Table 8.1.1-1.
    - 740 iii. The **head** element shall contain exactly one [1..1] **meta** element declaring the character set used: `<meta charset="UTF-8">`.
    - iv. The **head** element shall contain one or more [1..\*] **meta** elements encoding Dublin core attributes for the template, as shown in Figure 8.1-1 and Table 8.1.1-1.
      - 745 1. The **name** property of the **meta** element will be used to specify the template attribute.

2. For Dublin Core template attributes, the “**dcterms**” namespace shall be used.
3. The **content** property of the **meta** element will be used to specify the value of the template attribute.

750

755

760

765

770

```
<head>
  <title>CT Brain</title>
  <meta charset="UTF-8">
  <!--Dublin Core metadata elements here-->
  <meta name="dcterms.title" content="CT Brain">
  <meta name="dcterms.identifier" content="1.2.3.4.5">
  <meta name="dcterms.type" content="IMAGE_REPORT_TEMPLATE">
  <meta name="dcterms.language" content="en">
  <meta name="dcterms.publisher" content="Radiological Society of North
America (RSNA)">
  <meta name="dcterms.rights" content="May be used freely, subject to
license agreement">
  <meta name="dcterms.license"
content="http://www.radreport.org/license.pdf">
  <meta name="dcterms.date" content="2012-03-28">
  <meta name="dcterms.creator" content="Flanders AE, et al.">
  <meta name="dcterms.contributor" content="Bozkurt S [coder]">
  <meta name="dcterms.contributor" content="Kahn CE Jr [editor]">
  <meta name="dcterms.contributor" content="American Society of
Neuroradiology (ASNR)">
  <link rel="stylesheet" type="text/css" href="IHE_Template_Style.css" />
</head>
```

**Figure 8.1-1: Example of Dublin Core coded content in the <head> element**

775

780

785

- v. The **head** element shall contain exactly one [1..1] **script** element containing coded content.
  1. The **script** element shall be assigned a **type** attribute of “**text/xml**”.
  2. The **script** element shall contain exactly one [1..1] **template\_attributes** element.
    - a. The **template\_attributes** element may contain zero or more of the non-Dublin Core metadata elements specified in Table 8.1.1-2, such as status and top-level-flag.
    - b. The **template\_attributes** element may contain zero or one [0..1] **coding\_schemes** element
      - i. The **coding\_schemes** shall contain one or more [1..\*] **coding\_scheme** elements.

- 790
- 795
- 800
1. Each **coding\_scheme** shall contain exactly one name attribute and one **designator** attribute.
  - c. The **template\_attributes** element may contain zero or more [0..\*] **term** elements containing additional coded content applicable to the entire template that cannot be represented in Dublin Core attributes.
    - i. **term** elements may be assigned a **type** attribute indicating the template attribute for which the term tuple is the value. See the example shown in Figure 8.1-2.
    - ii. Each **term** element shall contain exactly one **code** element.
      1. Each **code** element shall contain exactly one **meaning** attribute, one **scheme** attribute and one **value** attribute. See Table 8.1.6.1-2.

```
805 <head>
      <!--title and Dublin Core meta elements here-->
      <script type="text/xml">
        <template_attributes>
          <!--non-Dublin Core metadata attributes and term elements here-->
          <top-level-flag>true</top-level-flag>
810 <status>ACTIVE</status>
          <coding_schemes>
            <coding_scheme name="RADLEX"
designator="2.16.840.1.113883.6.256" />
          </coding_schemes>
815 <term type="modality">
            <code meaning="computed tomography" value="RID10321"
scheme="RADLEX" />
          </term>
          <term type="body part">
820 <code meaning="brain" value="RID6434" scheme="RADLEX" />
          </term>
          <coded_content>
            <!--Other coded content here-->
          </coded_content>
825 </template_attributes>
      </script>
    </head>
```

**Figure 8.1-2: Example of non-Dublin-Core template attributes in the <script> element**

- 830 d. The **template\_attributes** element shall contain exactly one [1..1] **coded\_content** element, such as that shown in Figure 8.1-3. The **coded\_content** element contains coded content linked to specific elements in the **body** of the template.

Coded content shall be expressed as described in Section 8.1.6.1.

835

```
835 <head>
      <!-- title and Dublin Core meta elements here -->
      <script type="text/xml">
840         <template_attributes>
            <coded_content>
                <coding_schemes>
                    <coding_scheme name="RADLEX"
845 designator="2.16.840.1.113883.6.256" />
                </coding_schemes>
                <entry ORIGTXT="T003">
                    <term>
                        <code meaning="Ankle" value="RID28545" scheme="RADLEX" />
850                    </term>
                    <term>
                        <code meaning="Right" value="RID5825" scheme="RADLEX" />
                    </term>
                </entry>
                <!--additional entry elements here-->
            </coded_content>
        </template_attributes>
855     </script>
    </head>
```

**Figure 8.1-3: Coded Content Example**

- 860 vi. The **head** element may contain style information formatted according to HTML5 standards, using the **style** element for internal CSS style elements and the **link** element for CSS files.
- vii. The **head** element shall comply with all other HTML5 constraints.
- b. The **html** element shall contain exactly one [1..1] **body** element.
- 865 i. Identifiers in the **body** element shall use a hyphen (“-“) as separator to maintain compatibility with HTML5 features, such as custom coded content.
- ii. The **body** element shall contain at least one [1..\*] **section** element whose opening tag specifies the attributes described in Table 8.1.2-1.
- 870 1. Each **section** element shall contain exactly one [1..1] **header** element.

- 875
- a. The opening tag of the **header** element shall contain exactly one [1..1] **class** attribute indicating the section level. The value of the attribute shall be the string “level” followed by an integer indicating the nesting level (e.g., “level1”).
  - b. The header element may contain the title text for the section.
2. Each **section** element shall contain at least one [1..\*] HTML paragraph (**p**) element containing the section content.

880 **8.1.1 Template Attributes**

The following Dublin Core metadata attributes may be associated with each report template in the **head** element.

The “Opt” (Optionality) column applies to the Report Template Creator. For each report template:

- 885
- The Report Template Creator shall include values for metadata elements with optionality of “R”. The Report Template Creator may include values for metadata elements with optionality of “O”.
  - The Report Template Manager shall store the values for all metadata attributes, both those marked with optionality “R” and those marked with “O”.

890 **Table 8.1.1-1: Dublin Core Metadata Elements for Report Templates**

Dublin Core Template Metadata Elements	Description	Vocabulary Constraint	Opt
<b>dcterms.title</b>	A human readable name for the template. There is enforced correspondence with the title element in the head.	This value shall be the same as the value of the <b>title</b> element of the <b>head</b> element RAD TF-3: 8.1 2.a.ii	R
<b>dcterms.identifier</b>	A unique alphanumeric identifier (OID) included in any report instance generated using the template	This value shall be an Object identifier (OID) as specified in ITI TF-2x: Appendix B. A new value shall be assigned when elements outside of the <b>head</b> element are modified. It is permitted to retain the value when the <b>head</b> element is updated	R
<b>dcterms.type</b>	Indicates the type of XML document	Shall be “ <b>IMAGE_REPORT_TEMPLATE</b> ”	R

Dublin Core Template Metadata Elements	Description	Vocabulary Constraint	Opt
<code>dcterms.publisher</code>	The organizations who have published the template (e.g., RSNA, the local site)		R
<code>dcterms.rights</code>	Licensing considerations for the template		R
<code>dcterms.license</code>	A reference to a license that may govern the use of the template		R
<code>dcterms.date</code>	The date of unspecified purpose that could be the most recent modification of the template		R
<code>dcterms.creator</code>	An individual or group who primarily created this template		R
<code>dcterms.contributor</code>	An individual or group who contributed to the template		O
<code>dcterms.relation</code>	The identifier of a template which deprecates this template (i.e., a new version of this template)		O
<code>dcterms.language</code>	The language in which the template is written	ISO 639 two-letter language code: although template encoding is UTF-8 as specified in the <head> section, some special characters in different languages will need to use the unicode representation.	O

The following additional metadata attributes may be associated with each report template in the `template_attributes` element:

**Table 8.1.1-2: Other Metadata Elements for Report Templates**

Template Metadata Elements	Description	Vocabulary Constraint	Opt
<code>top-level-flag</code>	Binary attribute that indicates when the template should not be a subsection of another template	xsd:boolean	O
<code>status</code>	Marks templates that should no longer be used for creating reports.	Shall be one of: <b>DRAFT</b> , <b>ACTIVE</b> , <b>RETIRED</b>	O
<code>user-list</code>	The users to which this template may apply, separated by commas		O

Template Metadata Elements	Description	Vocabulary Constraint	Opt
<b>provider-group-list</b>	The provider groups to which this template may apply, separated by commas		O

895 Report Creators may use these metadata elements to guide application behavior.

### 8.1.2 Section Attributes

Table 8.1.2-1 shows the attributes that may be associated with each section. These attributes are specified as custom data attributes in the HTML start tag for the section. Figure 8.1.2-1 shows an example.

900

**Table 8.1.2-1: Attributes of Report Template Sections**

HTML5 Attribute	Description	Vocabulary Constraint	Opt
<b>data-section-name</b>	A human readable name for the section		R
<b>data-section-required</b>	A flag indicating whether this section must appear in the report (can be deleted)	xsd:boolean	O
<b>id</b>	Linking identifier for coded content that corresponds to this item.		O

905

910

```

<body>
  <section
    id="T002"
    data-section-name="Procedure:"
    >
    <header class="level1">Procedure:</header>
    <p>
      <!--Section content here-->
    </p>
  </section>
</body>

```

**Figure 8.1.2-1: Example of <section> element**

### 8.1.3 Report Template Fields

915 Many current reporting systems support the concept of fields, typically rendered as delimited by square brackets. Fields can serve many purposes, including:

- Emphasize a part of the report that frequently should be modified by the provider (e.g., left/right information). Default text may be provided, even where there is an expectation that it will be replaced or modified.

- 920 Enable rapid navigation among parts of the report that are frequently modified (e.g., using rewind and fast-forward buttons to move between fields).
- Serve as a visual cue for more complex user interface behavior (e.g., verbal triggers, pick lists, and other field types).
- Represent a field that must be accepted or edited before the report can be finalized.
- 925 Fields shall be described only using the HTML `select` or `input` elements and attributes as shown in Table 8.1.3-1 and in the subsections that follow.

**Table 8.1.3-1: Attributes of Report Template Fields**

Field Type	HTML5 Element	HTML5 Attribute	HTML5 Attribute Value
TEXT	<code>input</code>	<code>type</code>	<code>text</code>
TEXTAREA	<code>textarea</code>	-	-
NUMBER	<code>input</code>	<code>type</code>	<code>number</code>
SELECTION_LIST	<code>select</code>	<code>multiple</code>	<code>single, multiple</code>
DATE	<code>input</code>	<code>type</code>	<code>date</code>
TIME	<code>input</code>	<code>type</code>	<code>time</code>
CHECKBOX	<code>input</code>	<code>type</code>	<code>checkbox</code>
RADIO BUTTON	<code>input</code>	<code>type</code>	<code>radio</code>

### 8.1.3.1 Field Attributes

- 930 Table 8.1.3.1-1 shows the attributes associated with fields of any type. These are specified as attributes of the HTML element for the field.

**Table 8.1.3.1-1: Attributes of Report Template Fields**

HTML5 Attribute	Description	Vocabulary Constraint	Opt
<code>name</code>	A human readable alphanumeric identifier for this field.		R
<code>data-field-type</code>	The nature of the information intended to be captured by this field	<code>TEXT, TEXTAREA, NUMBER, SELECTION_LIST, DATE, TIME, CHECKBOX, RADIO BUTTON, MERGE</code> . See Sections 8.1.3.3-8.1.3.8.	R



HTML5 Attribute	Description	Vocabulary Constraint	Opt
<b>data-field-merge-flag</b>	Indicates whether content from an outside source can be accepted as the value of this field. If this attribute is absent, the assumed value is 'false'.	xsd:boolean	O
<b>data-field-verbal-trigger</b>	A word or phrase to enable rapid navigation to the field with a voice command. If no verbal trigger is specified, the Field name serves as the default verbal trigger.		O
<b>value</b>	The value of the field if the user does not modify it. This value is shown when the report template is initially displayed.		O
<b>data-field-completion-action</b>	Indicates an action that may be taken if the field is not populated by the user of the Report Creator	<b>NONE</b> <b>ALERT</b> <b>PROHIBIT</b>	O
<b>title</b>	Guidance to the user on how to populate this field. If present, the system shall be capable of communicating the title to the user.	No limit on title length; if present, it may be a word, sentence or many paragraphs.	O
<b>id</b>	Linking identifier for coded content that corresponds to this item.		O

A given field may have multiple attributes. Example:

935           name: Spleen size  
               data-field-type: text  
               value: normal  
               title: measure maximum dimension in coronal plane, and use cutoffs as follows: <13 cm = normal, 13-15 cm = mild, 15-20 = moderate, >20 = marked

940           Note: The field could alternately be rendered with a data-field type of "selection\_list" rather than "text", with possible values specified as per Section 8.1.3.5.

The values of the **data-field-completion-action** attribute shall be interpreted as follows:

**NONE:** The user may modify the field in any way, including deletion, without restriction. If no value for the **data-field-completion-action** field is specified, **NONE** is the default.

945           **ALERT:** If a field with this attribute value is blank or missing, the user is alerted at report completion time. These fields may be deleted by the user, but such a deletion also will cause an alert at completion time.

950       **PROHIBIT:** A value must be supplied for a field with this attribute value prior to report completion. Deletion is not allowed. If the field is blank, the report completion is prohibited.

### 8.1.3.2 Linkage Between Template Text and Template Fields

955       To signify that a field is semantically linked to specific template text, the text should be marked by a **label** element whose **for** attribute matches the **id** attribute of the associated field. If the text is modified, the **label** content associate with this field may be invalid. Figure 8.1.3.2-1 shows an example.

```
960       <label for="T010">The unenhanced liver attenuation is</label>
          <input id="T010"
          name="unenhanced_liver"
          data-field-type="NUMERIC"
          type="number"
          title="Liver attenuation"
          data-field-completion-action="ALERT"
965       value="0"
          max="1000"
          min="-1000"
          />
          HU.
```

**Figure 8.1.3.2-1: Example of Linkage Between Template Text and Template Field**

970       Section 8.1.6.3 discusses possible application behavior when semantically linked text is modified by the user.

### 8.1.3.3 Text or TextArea Field Attributes

975       Text fields may contain narrative text that is editable by the user. A text field helps organize report text into blocks for rapid navigation. Text fields are currently in wide use by radiology speech recognition systems. Single line text fields shall be expressed using the HTML5 **input** element with **type** attribute = **text**. Multi-line text fields shall be expressed using the HTML5 **textarea** element with optional attributes **rows** and **cols**.

### 8.1.3.4 Numeric Field Attributes

980       Numeric fields contain a numeric value with associated optional range and optional units. Numeric fields shall be expressed using the HTML5 **input** element with **type** attribute = **number**. Table 8.1.3.4-1-3 shows the additional attributes associated with numeric fields.

**Table 8.1.3.4-1: Attributes of Numeric Fields**

HTML5 Attribute	Description	Vocabulary Constraint	Opt
<b>min</b>	The minimum value this field will accept, checked by the Report Creator		O
<b>max</b>	The minimum value this field will accept, checked by the Report Creator		O
<b>data-field-units</b>	The unit of measure for the number, such as “HU”	Unified Code for Units of Measure (UCUM)	O
<b>step</b>	Use step=1 for integers, or specify a step value smaller than 1 for real numbers. (e.g., 0.1, or 0.01, depending on desired precision).		O

### 8.1.3.5 Selection List Field Attributes

985 Selection list fields can take on a value selected by the user from a list of items. Each item on the list may be associated with text that should be displayed in the report if that item is selected. Selection lists may have a default value, which is displayed in the field when the template is applied. A user choice among the list items may be required or optional. A single selection may be required, or multiple selected elements may be allowed. Only the attributes and coded content  
 990 associated with the item(s) selected by the user are associated with the report instance that is generated.

Selection list fields shall be expressed using the HTML5 `select` element. Table 8.1.3.5-4 shows the additional attributes associated with selection list fields.

**Table 8.1.3.5-4: Attributes of Selection List Fields**

HTML5 Attribute	Description	Vocabulary Constraint	Opt
<b>multiple</b>	<p><b>single</b>: Only one choice can be selected from the list of items, typically implemented as a menu or as radio buttons.</p> <p><b>multiple</b>: More than one choice can be selected from the list of items, typically implemented as multiple check boxes or as a multi-select menu.</p> <p>Default if unspecified is <b>single</b>.</p>	<p><b>single</b></p> <p><b>multiple</b></p>	O

995

### 8.1.3.5.1 Selection Items

Each selection item shall be expressed using the HTML5 `option` element within a `select` element. Table 8.1.3.5.1-1-5 shows the attributes associated with Selection Items.

**Table 8.1.3.5.1-1: Attributes of Selection Items**

HTML5 Tag	Description	Vocabulary Constraint	Opt
<b>name</b>	A human readable alphanumeric identifier of this item.		R
<b>value</b>	The text that should be displayed and incorporated into the report when this item is selected.	The value of this attribute must equal the content between the open and close tags	R
<b>data-template-UID</b>	The unique identifier of a template, as specified in its <b>dc:identifier</b> that should be substituted at an arbitrary point in the document. [use <b>span</b> or <b>div</b> element to specify location]		O
<b>data-replacement-element-id</b>	The id of the element to be replaced with the selected content. [use <b>span</b> or <b>div</b> element with corresponding <b>id</b> tag]		C, required if <b>data-template-UID</b> is present
<b>label</b>	A comment or instruction on the meaning of this item.		O
<b>data-verbal-trigger</b>	A word or phrase that, when dictated, causes this item to be selected by the Report Creator		O
<b>selected</b>	Binary variable indicating whether this item should be used as the default value for this field.		O
<b>id</b>	Linking identifier for coded content that corresponds to this item.		O

1000

If **data-template-UID** is specified, the template with that UID replaces the report text delimited by the element whose **id** corresponds to **data-replacement-element-id**. This function enables user selection of a menu item to trigger insertion of another template at an arbitrary point.

1005

### 8.1.3.6 Date Field Attributes

Date fields accept calendar date information. Date fields shall be expressed using the HTML5 `input` element with **type** attribute = **date**.

### 8.1.3.7 Time Field Attributes

1010 Time fields accept clock time information. Time fields shall be expressed using the HTML5 `input` element with `type` attribute = `time`.

### 8.1.3.8 Merge Field Attributes

1015 Merge fields accept information from other sources, such as patient information from an HL7 order, measurements from an ultrasound device, or a region of interest (ROI) calculation from an imaging workstation. These fields can substantially increase the efficiency of the user and the accuracy of the report by reducing the need to re-dictate or re-enter these data. Table 8.1.3.8-1 shows the additional attributes associated with merge fields.

**Table 8.1.3.8-1: Attributes of Merge Fields**

HTML5 Attribute	Description	Vocabulary Constraint	Opt
<code>data-merge-identifier</code>	An opaque string label for an implementation specific value that is obtained by the Report Creator		C, required for Merge fields only

1020 The MRRT Profile does not define how data from other sources are incorporated into merge fields. Transforming the merge data to fit into the report is an undefined task for the Report Creator. Those functions depend on the capabilities of the Report Creator, and may or may not be present. Report Creators may Merge data into any field type, including text, numeric, and selection list fields.

### 8.1.3.9 Checkbox Field Attributes

1025 Checkbox fields present the user with a control that can be toggled on/off. The Checkbox is associated with text that should be displayed in the report if that item is checked. The text value may or may not be the same as the name used to label the field, e.g., the name of the field could be “Tumor deposits” and the text value is “Yes”.

1030 Checkbox fields shall be expressed using the HTML5 `input` element with `type` attribute = `checkbox`. Table 8.1.3.9-1 shows the attributes associated with Checkbox fields.

**Table 8.1.3.9-1: Attributes of Checkbox Fields**

HTML5 Attribute	Description	Vocabulary Constraint	Opt
<code>checked</code>	Indicate whether this item is selected. This is used to set the default state.	<code>checked</code> or empty	O

### 8.1.3.10 Radio Button Field Attributes

1035 Radio Button fields present the user with a control where only one of the radio buttons within the same named group can be checked (“on”). The Radio buttons are associated with text that should be displayed in the report if that item is checked. The text value is not required to be the same as the name used to label the field.

Radio Button fields shall be expressed using the HTML5 `input` element with `type` attribute = `radio`. Table 8.1.3.10-1 shows the attributes associated with Radio Button fields.

1040 **Table 8.1.3.9-1: Attributes of Radio Button Fields**

HTML5 Attribute	Description	Vocabulary Constraint	Opt
<b>checked</b>	Indicate whether this item is selected. This is used to set the default state.	<b>checked</b>	O
<b>name</b>	Specify the name of the group of radio buttons in which only one of them can be checked.		R
<b>value</b>	Specify the value submitted by the corresponding radio button when it is checked.		R

### 8.1.4 Incorporating Templates into Other Templates

1045 Templates may be incorporated into other templates, sometimes called “nested” or “modular” templates. The HTML5 `embed` element shall be used to indicate the location where a template should be included. The `src` attribute of the `embed` element shall contain a string concatenating the unique identifier for the template to be included, and “.html”. The `type` attribute of the `embed` element shall be “text/html”. Figure 8.1.4-1 shows an example of how content from Template2 could be embedded in Template1; Template1 will contain the HTML shown in the figure at the point where Template2 should be included:

1050 

```
<embed src="1.2.3.4.6.html" type="text/html" />
```

**Figure 8.1.4-1: Example of Incorporating Content from Template2**

When content from Template2 are embedded in Template1, identifiers shall be prefixed to avoid namespace conflicts.

### 1055 8.1.5 Permitted HTML5 Formatting Tags

Table 8.1.5-1 shows the HTML5 tags that may be used to format and markup a template. Other formatting tags are permitted but will be ignored.

**Table 8.1.5-1: Permitted HTML5 Formatting Tags**

HTML5 Tag	Description
<a>	Hyperlink to a web resource specified by the <b>href</b> attribute
 	Line break
<div>	Container that can be used to group elements
<em>	Emphasized text, often in italics
<img>	Image
<li>	List item
<ol>	Ordered list
<p>	Paragraph
<q>	Short quotation
<span>	Groups inline text and other elements
<strong>	Important text, often bold
<sub>	Subscripted text
<sup>	Superscripted text
<table>	Defines a table
<td>	Table cell
<th>	Header cell in a table
<tr>	Table row
<u>	Stylistically different text, often underlined
<ul>	Unordered list

1060 **8.1.6 Coded Content**

Report components may be associated with coded content, such as terms from a controlled vocabulary that explicitly represent the semantics of the text. These references may be used to link text in the report template or the report instance with the associated machine-readable semantic content. These references enable applications to manage the relationship between report text and associated coded content during user editing.

1065

**8.1.6.1 Simple Format for Coded Content**

The `template_attributes` element within the `script` element of each template contains a block of `coded_content`:

1. The `coded_content` may contain zero or one [0..1] `coding_schemes` element.
  - a. The `coding_schemes` shall contain one or more [1..\*] `coding_scheme` elements.

1070

- i. Each **coding\_scheme** shall contain exactly one **name** attribute and one **designator** attribute.

**Table 8.1.6.1-1: Attributes of a <coding\_scheme> Element**

Attribute	Description	Vocabulary Constraint	Opt
<b>name</b>	The name of the coding_scheme.	A valid coding scheme designator. A reference list for well-known coding scheme designator is available in DICOM Part 16 Section 8.	R
<b>designator</b>	The unique value that identifies the coding scheme designator.	An Object identifier (OID) as specified in ITI TF-2x: Appendix B.	R

- 1075 2. The **coded\_content** element may contain zero or more [0..\*] **entry** elements.
- a. The opening tag of each **entry** element shall contain an **ORIGTEXT** attribute whose value matches the **id** attribute of an element in the **body** to which the coded content in the **entry** applies.
  - b. Each **entry** shall contain at least one [1..\*] **term** element, encoded in XML
    - 1080 i. Each term element shall contain exactly one **code**.
      1. Each **code** element shall contain exactly one **meaning** attribute, one **scheme** attribute and one **value** attribute.
    - ii. **term** elements may be assigned a **type** attribute indicating the template attribute for which the term tuple is the value.

**Table 8.1.6.1-2: Elements of a <code> Element**

Element	Description	Vocabulary Constraint	Opt
<b>meaning</b>	Human readable text provided for the convenience of readers		R
<b>value</b>	A computer readable and computer searchable identifier that is unambiguous within the coding scheme denoted by the scheme		R



Element	Description	Vocabulary Constraint	Opt
<b>scheme</b>	Reference to a defined <b>coding_scheme</b> element within the template which uniquely identifies the resource where the <b>value</b> is linked to its <b>meaning</b>	Defined values specified in the <b>name</b> attribute of the defined <b>coding_scheme</b> element. The values defined are case sensitive.	R

Figure 8.1.6.1-1 shows a simple example in which the identifier **T002** is used to link a section in the **body** to a RadLex term specified in the **coded\_content** block. By repeating the term block, a list of terms could be used to specify the coded content.

1090

1095

1100

1105

1110

1115

1120

```

<head>
  <!--other head items here-->
  <script>
    <template_attributes>
      <!--other attributes applicable to the entire template here-->
      <coded_content>
        <coding_schemes>
          <coding_scheme name="RADLEX"
designator="2.16.840.1.113883.6.256" />
        </coding_schemes>
        <entry ORIGTXT="T002">
          <term>
            <code meaning="Procedure" value="RID1559" scheme="RADLEX"
/>
          </term>
        </entry>
        <!--additional entries here-->
      </coded_content>
    </template_attributes>
  </script>
</head>
<body>
  <section
    id="T002"
    class="level1"
    data-section-name="Procedure:">
    <header class="level1">Procedure:</header>
    <p>
      <!--Section content here-->
    </p>
  </section>
  <!--remainder of template body here-->
</body>

```

**Figure 8.1.6.1-1: Simple Coded Content Example**

### 1125 **8.1.6.2 Complex Coded Content**

Unfortunately, an unstructured list of terms is sometimes insufficient to express even simple concepts. Listed below are examples of coded content too complex to express in an unstructured list:

- 1130 1. Concept: “Pain in the left upper quadrant and the right lower quadrant” Term list: (PAIN, RLQ, LUQ). Does the pain apply to both RLQ and RUQ, or just one?
2. Concept: “Numbness and pain the left face and right shoulder”. Term list: (LEFT, FACE, RIGHT, SHOULDER, PAIN, NUMBNESS). Which body parts are specified, and which symptom belongs with which part?
- 1135 3. Concept: “A mass projects from the medial aspect of a calcified left kidney”. Term list: (MASS, PROJECTS, MEDIAL, CALCIFIED, LEFT, KIDNEY). Is the kidney or the mass calcified?

The [MRRT white paper](#) proposes a simple recursive structure, called a Term Set, to express more complex coded content. However, the use of HL7 CDA encoding or other standard methods may also provide sufficiently rich expressions that could be passed along from a report template to a report instance. The MRRT Profile does not address expressions of coded content other than lists of terms.

### 1140 **8.1.6.3 Managing Coded Content during Template Editing**

Report creation tools typically provide a text editor metaphor, allowing the user to select, delete, edit, or add text at an insertion point. When text linked to coded content is edited by the user, the coded entries underlying the text may no longer be valid. In the worst case, the user might edit the text to negate the sentence. How these dependencies are managed will be left to each system implementation. Possible actions include doing nothing, warning the user, or deleting associated coded content.

### 1150 **8.1.7 Merging Data into Report Templates**

It may be desirable to merge data into a template field from another source. There are many possible sources from which this merge data might be derived:

- The HL7 order for this study
- Other information in the radiology information system (RIS)
- The DICOM<sup>3</sup> image header for this study
- 1155 A DICOM structured report for this study
- Previous reports for this same patient

---

<sup>3</sup> DICOM is the registered trademark of the National Electrical Manufacturers Association for its standards publications relating to digital communications of medical information.

The electronic medical record for this same patient

1160 The [MRRT white paper](#) proposes a Merge Retrieval Method that retrieves these data from a Merge Source. However, a simpler and more prevalent method for the retrieval of merge data is described in the MRRT Profile. A single opaque identifier, which is an attribute of each Merge field, may be used by an application to retrieve data to merge into the template. How an application manages the correspondence between this identifier and specific merge capabilities is left to each system implementation.

### 8.1.8 Relationships among Templates

1165 It may be useful for applications to maintain relationships among templates. However, the MRRT Profile specifies that `dc:relation` attribute shall be used only to represent the “deprecated by” relationship.

1170 Other relationships, such as creating a “CT Abdomen” template, with children “CT Abdomen with IV contrast” and “CT Abdomen without, then with, IV contrast”, with children inheriting some attributes and features of the parent template are beyond the scope of the MRRT Profile.